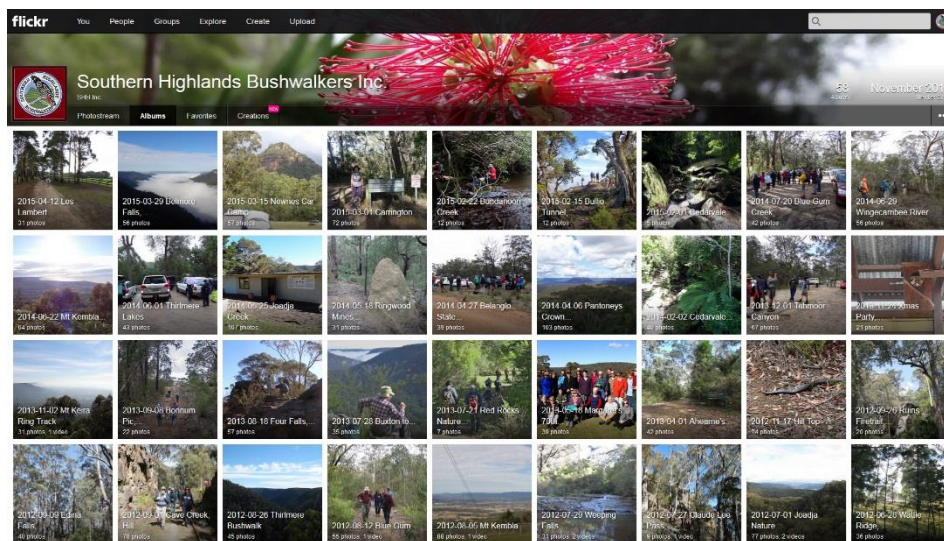


SHB Inc. Flickr Photo Albums

We currently use Flickr to share photos from club bushwalks and events.

These can be viewed from the link below (you must first join the SHB Inc. Flickr Group – see next section).

SHB Inc. Flickr Albums: <https://www.flickr.com/photos/shbinc/albums>



NOTE: Photos are only viewable by club members, they are not public.

Joining the SHB Inc. Flickr Group

All members are welcome to join by following the instructions below, and encouraged to share/contribute photos taken on bushwalks or events attended with the club.

As the photos are not public, you must be granted access to be able to view them.

To access the SHB Inc. Flickr page, please follow the steps below.

1. Go to <https://www.flickr.com> then click on **Sign Up** and create a Flickr account **(so we can identify you as a SHB club member, please make sure your real name is visible in Flickr, or e-mail us your Flickr username).**
2. **Login to your Flickr account** and go to <https://www.flickr.com/photos/shbinc/albums>
3. Click the **"Follow"** button on the SHB Inc. Flickr page



4. We will then be notified of your Follow request and mark you as a "Friend" **(you will not see the photos until we have accepted your request)**

When we accept your request, you will receive a notification and then be able to view the albums here: <https://www.flickr.com/photos/shbinc/albums>

You will also receive an invite to join a shared photos "group pool" where you can upload any photos you take (refer to the next page for sharing instructions).

If any assistance is required, please feel free to e-mail shbinc.photos@gmail.com

SHB Inc. Flickr Group Photo Pool (sharing your photos)

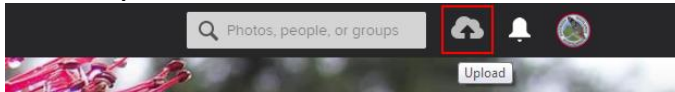
You can share your photos by adding them to the [SHB Inc. Group Photo Pool](#).

Photos added to the group will be copied to the SHB Inc. Albums page so they are viewable by all members.

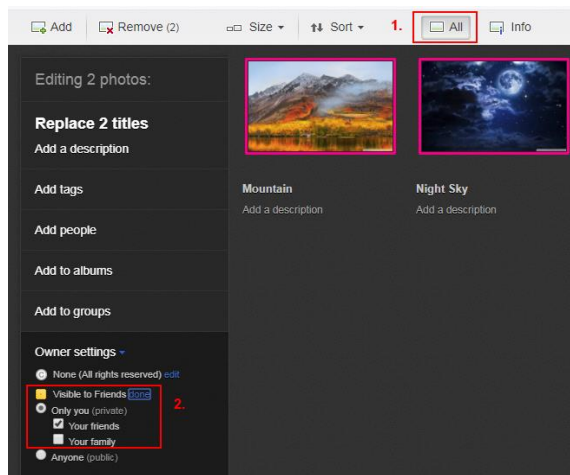
Before uploading photos however, you should [review your default privacy settings](#) (defaults for new uploads), so photos you upload are not public.

When ready to upload photos, follow the steps below.

1. Click the **Upload** button

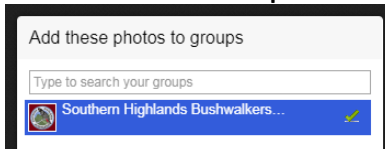


2. Drag and drop photos to upload (or click the **Add** button to select files)
3. Before uploading, you can verify photos are not public or change the privacy settings as follows:

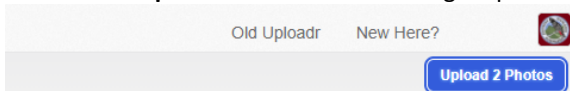


Click **All** to select all photos
Click **edit** under **Owner settings**
Set the photo visibility to **private** or **friends/family**

4. Prepare your photos for upload (i.e. edit photo titles, descriptions, etc.)
5. Click **All** to select all photos
6. Click **Add to groups**
7. Select the **SHB Inc. Group** and click **Done**



8. Click on the **Upload Photos** button to begin uploading



9. The photos will then be uploaded to your photostream and added to the SHB Inc. Group Photo Pool

After you add photos to this group, we will then copy them into an album so they are organised by walk date, and viewable from the album page here: <https://www.flickr.com/photos/shbinc/albums>

Please make sure your photos are named by date and walk description, so an appropriate album can be created.